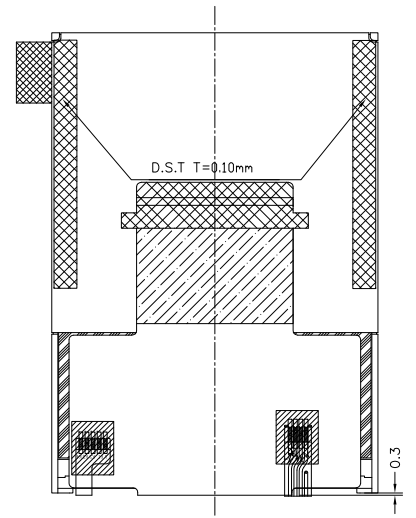
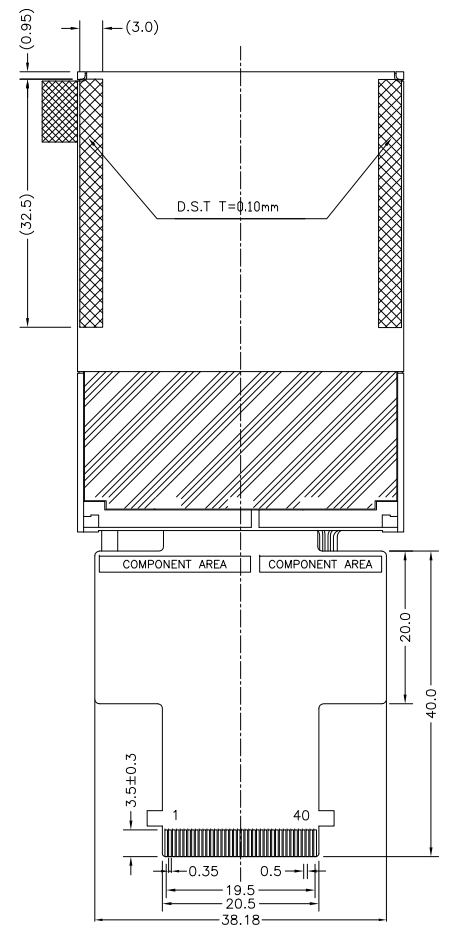
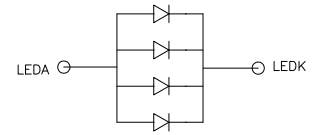


DETAIL A
(SCALE 40:1)



FPC BENDING DIAGRAM
(FOR REFERENCE)



BACKLIGHT CIRCUIT DIAGRAM

- NOTES:
1. DISPLAY TYPE: TFT, TRANSMISSIVE, NORMALLY WHITE.
 2. OPERATING VOLTAGE: VCC=2.8V, IOVCC=1.8V/2.8V.
 3. VIEWING DIRECTION: 6:00 O'CLOCK.
 4. IC DRIVER: ILI9341V.
 5. OPERATING TEMP: -20°C ~ 70°C.
 6. STORAGE TEMP: -30°C ~ 80°C.
 7. SURFACE LUMINANCE: 360CD/M² (TYP.).
 8. SURFACE TREATMENT: ANTI-GLARE.
 9. LED BACKLIGHT: 4-CHIP WHITE LED, If=60mA, Vf=3.2V.
 10. GENERAL TOLERANCE: ±0.2MM.
 11. RoHS COMPLIANT.

PIN ASSIGNMENT		
PIN NO	SYMBOL	
1	LEDK	
2	LEDA	
3	GND	
4	NC	
5	NC	
6	NC	
7	SDA	
8	DOTCLK	
9	DE	
10	VSYNC	
11	HSYNC	
12	VCC	
13	RESET	
14	GND	
15	DB17	
16	DB16	
17	DB15	
18	DB14	
19	DB13	
20	DB12	
21	DB11	
22	DB10	
23	DB9	
24	DB8	
25	DB7	
26	DB6	
27	DB5	
28	DB4	
29	DB3	
30	DB2	
31	DB1	
32	DB0	
33	RD	
34	WR	
35	RS	
36	CS	
37	XR	
38	YD	
39	XL	
40	YU	

Mit MULTI-INNO TECHNOLOGY CO.,LTD.

DRAWN BY:	RITA	2019.12.23		MODULE P/N:
CHECKED BY:			SCALE : 1/1	MI0240A3T-3
APPROVED BY:			UNIT: mm	DESCRIPTION:
VERSION NO:	01		SHEET NO.: 1/1	TFT MODULE

01	FIRST ISSUE	RITA	2019.12.23
VER.	REVISED DESCRIPTION	REVISER	DATE